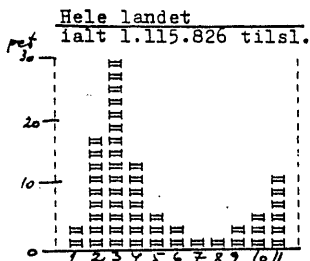


Bilag til bet. o. f. t. beslutn. om etablering af hybridnet

POST- OG TELEGRAFVÆSENET
TELESTYRELSEN
Teknisk afdeling

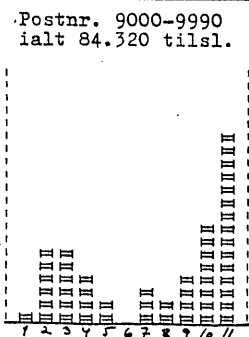
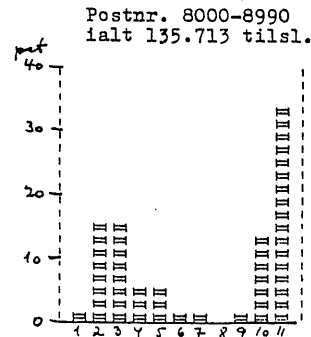
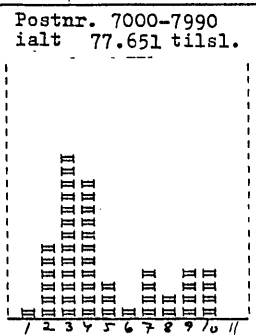
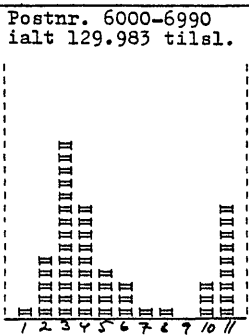
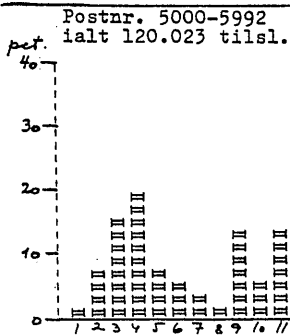
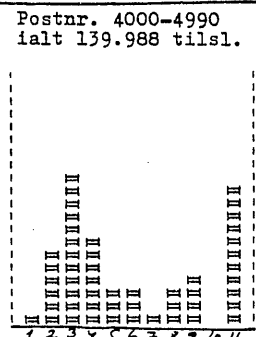
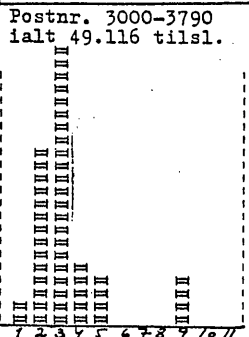
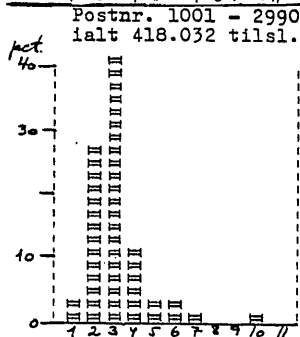
i fællesantennenlæg opdelt efter anlæggenes størrelse
1982



Størrelsesgruppering

1: < 25 tilsl.	
2: 26-100 -	
3: 101-500 -	
4: 501-1000 -	
5: 1001-1500 -	
6: 1501-2000 -	
7: 2001-2500 -	
8: 2501-3000 -	
9: 3001-6000 -	
10: 6001-10000 -	
11: >10.000 -	

ialt 8615 anlæg
2468 anl.
4073 -
1716 -
230 -
51 -
27 -
13 -
7 -
14 -
8 -
8 -



Postnr.-områder:

